

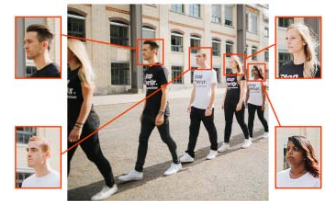
- ▶ AI Engine Gen 2
- ▶ i-CS Lens Support Option*
- ▶ Auto Back Focus (ABF) Option*
- ▶ Dual IRIS Support (Auto-IRIS & P-IRIS)
- ▶ Triple Power Support (PoE/ DC12V/ AC24V)



*Optional

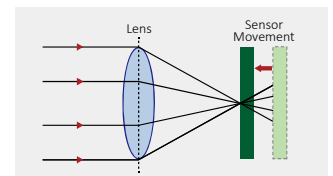
6x AI Power Advancement

With an astounding 6x increase in AI power over its predecessor (AI Engine Gen1), D series with AI Engine Gen 2 stands ready to revolutionize the world with high accuracy object detection and recognition, even at long distances, all while delivering superior image quality.



Auto Back Focus (ABF)

Focus fine-tuning is made easy by an auto back focus mechanism which adapts to compatible CS mount mega pixel lenses; this auto back focus function can be done by camera itself, or executed remotely to save time and labor cost needed for on-site focus adjustment.



Features

- ▶ Progressive Scan CMOS Sensor support up to 8M Resolution
- ▶ Multi Exposure HDR
- ▶ Multi Codec support (H.265/H.264/MJPEG)
- ▶ Quad Streams support
- ▶ True Day/Night function (ICR)
- ▶ 3D Motion Compensated Noise Reduction (MCTF)
- ▶ Micro SD/SDHC/SDXC Card support
- ▶ RS485 support
- ▶ ONVIF Profile S/G/T/M support
- ▶ Deep Neural Network Accelerated Engine
 - ▶ Detection and Recognition – Human / Vehicle
 - ▶ Behavior Analytics – Human / Vehicle / Object
- ▶ Smart Event function
 - ▶ External Input/ Motion Detection
 - ▶ Network Failure Detection/ Tampering Alarm
 - ▶ Periodical Event/ Manual Trigger/ Audio Detection
- ▶ BNC Analog Output for installation support

Preliminary

Custom Specification (Default)

Sony 8M		
Image Sensor	Sony 8M 1/1.8" Progressive CMOS	
Effective Pixels	HxV = 3856x2180(8M)	
Video Resolution	3840 x 2160	
Pixel Size	2.0 μm	
Frame Rate (Maximum)	H.265	HDR 8M @30fps + 2M @30fps
	H.264	HDR 8M @30fps + 2M @30fps
	MJPEG	HDR 2M @30fps
Lens		
Minimum Illumination	Color	TBD lux
	B/W	TBD lux
Lens	CS Mount lens Remote focus (ABF)* i-CS lens*	

* Optional

System Integration	
Event Triggers	External Input, Analytics, Network Failure Detection, Periodical Event, Manual Trigger
Event Actions	External output Activation Video and audio recording to edge storage File Upload : FTP, network share and email Notification : HTTP, FTP, email
Intelligent Video Analytics	
General Analytics	Motion Detection/Audio Detection
DNN Analytics	Face Detection/Recognition LPR Detection/Recognition Human Detection/Recognition/Tracking Vehicle Detection/Recognition/Tracking Human/Vehicle/Object Behavior Analytics

Common Specification

Camera	
Day and Night	Automatically removable IR-cut filter
Shutter Time	1~1/10K sec.
HDR	Yes
Digital Zoom	10x
Image Settings	Color, Brightness, Sharpness, Contrast White Balance, Exposure Control 2DNR, 3DNR, NR by Motion Masking, Text Overlay
Rotation	90°, 180°, 270° rotation
Video Codec	
Compression	H.265/H.264/MJPEG
Streaming	Up to 4 individually configurable streams in H.265/H.264/MJPEG Configurable resolution/frame rate/bandwidth LBR/VBR/CBR in H.265/H.264
Audio Codec	
Compression	G.711/G.726/AAC/LPCM
Streaming	2 way
Audio Input	Line in and Microphone built-in
Audio Output	Line out
Network	
Interface	1Gbps Ethernet
Security	User Authentication/HTTPS/IP Filter/IEEE 802.1x
Supported Protocols	ARP, PPPoE, IPv4/v6, ICMP, IGMP, QoS, TCP, UDP, DHCP, UPnP, SNMP, SMTP, RTP, RTSP, HTTP, HTTPS, FTP, NTP, DDNS
ONVIF	Profile S/G/T/M conformant

General	
Casing	Metal and Plastic
Power	PoE IEEE802.3af, class 0, max TBD watt DC24V, max TBD watt AC24V, max TBD watt, max TBD VA
Connectors	RJ45
	Alarm in x2, Alarm out x1, Terminal Block
	DC12V Terminal Block
	AC 24V Terminal Block
	Audio in 3.5mm Jack
	Audio out 3.5mm Jack
	CVBS Connector
RS485 Terminal Block	
Storage	Support for microSD/microSDHC/microSDXC card Support for recording to NAS
Operating Conditions	-30°C~55°C 10%~90%, No Condensation
Storage Conditions	-20°C~70°C
Approvals	EMC CE/FCC
Dimensions	ABF 150x82x52 mm
	Non ABF 125x80x53 mm
Weight	ABF 395g
	Non ABF 300g

Custom Specification

Default

Preliminary

Sony 8M		
Image Sensor	Sony 8M 1/1.8" Progressive CMOS	
Effective Pixels	HxV = 3856x2180(8M)	
Video Resolution	3840 x 2160	
Pixel Size	2.0 μm	
Frame Rate (Maximum)	H.265	HDR 8M @30fps + 2M @30fps
	H.264	HDR 8M @30fps + 2M @30fps
	MJPEG	HDR 2M @30fps
Lens		
Minimum Illumination	Color	TBD lux
	B/W	TBD lux
Lens	CS Mount lens Remote focus (ABF)* i-CS lens*	

* Optional

Sony 2M		
Image Sensor	Sony 2M 1/2.0" Progressive CMOS	
Effective Pixels	HxV = 1945x1097(2M)	
Video Resolution	1920x1080	
Pixel Size	3.75 μm	
Frame Rate (Maximum)	H.265 / H.264	Linear 2M @120fps + 720p @30fps
	H.265 / H.264	HDR 2M @30fps + 2M @30fps
	MJPEG	HDR 2M @30fps
Lens		
Minimum Illumination	Color	0.05 lux
	B/W	0.01 lux
Lens	CS Mount lens Remote focus (ABF)* i-CS lens*	

* Optional

Omni Vision 8M		
Image Sensor	Omni Vision 8M 1/1.8" Progressive CMOS	
Effective Pixels	HxV = 3872 x 2192(8M)	
Video Resolution	3840 x 2160	
Pixel Size	2.0 μm	
Frame Rate (Maximum)	H.265	HDR 8M @30fps + 2M @30fps
	H.264	HDR 8M @30fps + 2M @30fps
	MJPEG	HDR 2M @30fps
Lens		
Minimum Illumination	Color	0.1 lux
	B/W	0.01 lux
Lens	CS Mount lens Remote focus (ABF)* i-CS lens*	

* Optional

Sony 2M		
Image Sensor	Sony 2M 1/2.8" Progressive CMOS	
Effective Pixels	HxV = 1936x1100 (2M)	
Video Resolution	1920x1080	
Pixel Size	2.9 μm	
Frame Rate (Maximum)	H.265	HDR 2M @30fps + 2M @30fps
	H.264	HDR 2M @30fps + 2M @30fps
	MJPEG	HDR 2M @30fps
Lens		
Minimum Illumination	Color	TBD lux
	B/W	TBD lux
Lens	CS Mount lens Remote focus (ABF)* i-CS lens*	

* Optional