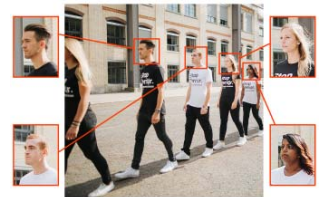


- ▶ AI Engine Gen 2
- ▶ Zoom Lens/ Motorized Lens Available
- ▶ Remote Zoom/ Focus/ IRIS Control on AF Lens
- ▶ Dual IRIS Support (Auto-IRIS & P-IRIS)
- ▶ Triple Power Support (PoE/ DC12V/ AC24V)
- ▶ IR LED Built-in



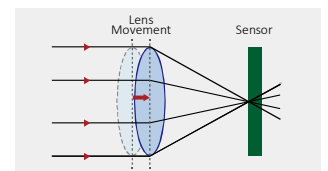
## 6x AI Power Advancement

With an astounding 6x increase in AI power over its predecessor (AI Engine Gen1), D series with AI Engine Gen 2 stands ready to revolutionize the world with high accuracy object detection and recognition, even at long distances, all while delivering superior image quality.



## Auto Focus

With the zoom lens and unique algorithm, fast and reliable auto focus can be realized for different indoor and outdoor scenes. As auto focus can be done by camera itself, no on-site focus adjustment is required.



## Features

- ▶ Progressive Scan CMOS Sensor support up to 8M Resolution
- ▶ Multi Exposure HDR
- ▶ Multi Codec support (H.265/H.264/MJPEG)
- ▶ Quad Streams support
- ▶ True Day/Night function (ICR)
- ▶ IR LED (working distance up to 40m)
- ▶ 3D Motion Compensated Noise Reduction (MCTF)
- ▶ Micro SD/SDHC/SDXC Card support
- ▶ Deep Neural Network Accelerated Engine
  - ▶ Detection and Recognition – Human / Vehicle
  - ▶ Behavior Analytics – Human / Vehicle / Object
- ▶ Smart Event function
  - ▶ External Input/ Motion Detection
  - ▶ Network Failure Detection/ Tampering Alarm
  - ▶ Periodical Event/ Manual Trigger/ Audio Detection
- ▶ ONVIF Profile S/G/T/M support
- ▶ Weatherproof (IP66)

Preliminary

### Custom Specification ( Default )

Sony 8M		
Image Sensor	Sony 8M 1/1.8" Progressive CMOS	
Effective Pixels	HxV = 3856x2180 (8M)	
Video Resolution	3840 x 2160	
Pixel Size	2.0 µm	
Frame Rate (Maximum)	H.265	HDR 8M @30fps + 2M @30fps
	H.264	HDR 8M @30fps + 2M @30fps
	MJPEG	HDR 2M @30fps
Lens		
Minimum Illumination	Color	TBD lux
	B/W	TBD lux
Lens	Type	Motorized Lens, P-Iris, F1.5
	Focal Length	3.6-11mm
	Horizontal FOV	TBD
	Vertical FOV	TBD

System Integration	
Event Triggers	External Input, Analytics, Network Failure Detection, Periodical Event, Manual Trigger
Event Actions	External output Activation Video and audio recording to edge storage File Upload : FTP, network share and email Notification : HTTP, FTP, email
Intelligent Video Analytics	
General Analytics	Motion Detection/Audio Detection
DNN Analytics	Face Detection/Recognition LPR Detection/Recognition Human Detection/Recognition/Tracking Vehicle Detection/Recognition/Tracking Human/Vehicle/Object Behavior Analytics

### Common Specification

Camera	
Day and Night	Removable IR-cut filter
Shutter Time	1~1/10K sec.
HDR	Yes
Digital Zoom	10x
Image Settings	Exposure, White Balance, Brightness, Sharpness, Contrast, Saturation, Hue, Day/Night Threshold, Noise Reduction, Backlight Compensation, Text Overlay, Privacy Mask
Rotation	90°, 180°, 270° rotation
Video Codec	
Compression	H.265/H.264/MJPEG
Streaming	Up to 4 individually configurable streams in H.265/H.264/MJPEG Configurable resolution/frame rate/bandwidth LBR/VBR/CBR in H.265/H.264
Audio Codec	
Compression	G.711/G.726/AAC/LPCM
Streaming	2 way
Audio Input	Line in
Audio Output	Line out
Network	
Interface	10/100/1000Mbps Ethernet
Security	User Authentication/HTTPS/IP Filter/IEEE 802.1x
Supported Protocols	ARP, PPPoE, IPv4/v6, ICMP, IGMP, QoS, TCP, UDP, DHCP, UPnP, SNMP, SMTP, RTP, RTSP, HTTP, HTTPS, FTP, NTP, DDNS
ONVIF	Profile S/G/T/M conformant

General		
Casing	Metal and Plastic	
Power	PoE IEEE802.3af, class 0, max TBDwatt DC12V, TBD watt AC24V, max TBD watt, max TBD VA	
Connectors	RJ45	
	Alarm in x2, Alarm out x1, Terminal Block	
	DC12V Terminal Block	
	AC 24V Terminal Block	
	Audio in 3.5mm Jack Audio out 3.5mm Jack	
IR Illumination Distance	40m	
Storage	Support for microSD/microSDHC/microSDXC card Support for recording to NAS	
Operating Conditions	-30°C~55°C without heater -55°C~55°C with heater 10%~90%, No Condensation	
Storage Conditions	-20°C~70°C	
Approvals	EMC	CE/FCC
	Safety	RoHS
	Environment	IP66
Dimensions	Ø92x224.6 mm	
Weight	780 g	



#### DYNACOLOR, INC. (HEADQUARTERS)

No, 116, Jou Tz Street, Neihu, Taipei 114, Taiwan  
 Tel: +886-2-2659-8898 / Fax: +886-2-2659-8868  
 E-mail: info@dynacolor.com.tw  
 URL: http://www.dynacolor.com.tw

## Custom Specification

Default

Preliminary

Sony 8M		
Image Sensor	Sony 8M 1/1.8" Progressive CMOS	
Effective Pixels	HxV = 3856x2180 (8M)	
Video Resolution	3840 x 2160	
Pixel Size	2.0 $\mu$ m	
Frame Rate (Maximum)	H.265	HDR 8M @30fps + 2M @30fps
	H.264	HDR 8M @30fps + 2M @30fps
	MJPEG	HDR 2M @30fps
Lens		
Minimum Illumination	Color	TBD lux
	B/W	TBD lux
Lens	Type	Motorized Lens, P-Iris, F1.5
	Focal Length	3.6-11mm
	Horizontal FOV	TBD
	Vertical FOV	TBD