

- ▶ Deep Neural Network Accelerated Engine
- ▶ Outstanding High Dynamic Range
- ▶ Excellent Low Light Performance
- ▶ Zoom Lens/ Motorized Lens Available
- ▶ Remote Zoom/ Focus/ IRIS Control on AF Lens
- ▶ Dual IRIS Support (Auto-IRIS & P-IRIS)
- ▶ Vandal Proof IK10



## DNN Edge Analytics

The latest computer vision technology makes DNN accelerated video processing engine efficient at the edge. This engine provides high accuracy, real-time object tracking and human face detection. Moreover, it allows simultaneous detection on multiple objects.



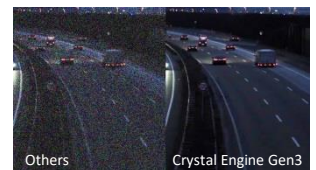
## HDR Engine Gen3

The latest HDR engine delivers excellent, natural high dynamic images. Both details of high light and low light areas are kept, and no blending artifacts are generated.



## Crystal Engine Gen3

Under extremely low light environment, Crystal engine gen3 delivers low noise, high quality image without compromising on details. In addition, it also keeps image sharp on motion object.



## Features

- 5M Progressive Scan CMOS
- Multi Exposure HDR
- Multi Codec support (H.265/ H.264/ MJPEG)
- Quad Streams support
- True Day/Night function (ICR)
- IR LED (working distance up to 40m)
- 3D Motion Compensated Noise Reduction
- Micro SD/ SDHC/ SDXC Card support
- ONVIF Profile S/ G/ T/ M support
- Deep Neural Network Accelerated Engine
  - Face/ LPR Detection and Recognition
  - Object Classification and Recognition
  - People Counting and Tracking
- Smart Event function
  - External Input/ Manual Trigger
  - Motion Detection/ Periodical Event
  - Network Failure Detection/ Audio Detection
- Weatherproof (IP66)
- Vandal Proof (IK10 Rating)

Preliminary

**Custom Specification ( Default )**

OmniVision 5M		
Image Sensor	OmniVision 5M 1/2.7" Progressive CMOS	
Effective Pixels	HxV = 2720x1976 (5M)	
Pixel Size	2.0 μm	
Frame Rate (Maximum)	H.265 HDR 5M @30fps + 720p @30fps	
	H.264 HDR 5M @30fps + 720p @30fps	
	MJPEG 1080p @30fps	
Lens		
Minimum Illumination	Color	0.08 lux
	B/W	0.008 lux
Lens	Type	Motorized Lens, P-Iris, F1.6
	Focal Length	2.7-12mm
	Horizontal	102.1° (wide), 31.5° (tele)
	Vertical	70.3° (wide), 22.7° (tele)

Intelligent Video Analytics	
General Analytics	Motion Detection/ Tampering/ Audio detection
DNN Analytics	Face Detection/ Tracking/ Recognition LPR Detection/ Recognition People Counting Human/ Vehicle Classification Object Classification/ Recognition

**Common Specification**

Camera	
Day and Night	Removable IR-cut filter
Shutter Time	1~1/10K sec.
HDR	Gen3 Engine
Zoom	Optical zoom, digital zoom ready by lens type
Image Settings	Exposure, White Balance, Brightness, Sharpness, Contrast, Saturation, Hue, IR Threshold, Noise Reduction, Backlight Compensation, Privacy Mask, Privacy Mask Type, ICR
Corridor Mode	90°, 180°, 270° rotation
Video Codec	
Compression	H.265/ H.264/ MJPEG
Streaming	Up to 4 individually configurable streams/ resolution/ frame rate/ bandwidth in H.265/ H.264/ MJPEG LBR/ VBR/ CBR in H.265/ H.264
Audio Codec	
Compression	G.711/ G.726/ AAC/ LPCM
Streaming	2 way
Audio Input	Line in
Audio Output	Line out
Network	
Interface	1Gbps Ethernet
Security	User Authentication/ HTTPS/ IP Filter/ IEEE 802.1x
Supported Protocols	ARP, PPPoE, IPv4/v6, ICMP, IGMP, QoS, TCP, UDP, DHCP, UPnP, SNMP, SMTP, RTP, RTSP, HTTP, HTTPS, FTP, NTP, DDNS
ONVIF	Profile S/ G/ T/ M conformant
System Integration	
Event Triggers	External Input, Analytics, Network Failure Detection, Periodical Event, Manual Trigger
Event Actions	External output Activation Video and audio recording to edge storage File Upload : FTP, network share and email Notification : HTTP, FTP, email

General	
Casing	Metal and Plastic
Power	PoE IEEE802.3af, class 0, max TBD watt DC12V, TBD A, max TBD watt AC24V, max TBD watt, max TBD VA
Connectors	RJ45
	Alarm in x2, Alarm out x1, Terminal Block
	DC12V Terminal Block
	AC24V Terminal Block
	Audio in 3.5mm Jack Audio out 3.5mm Jack
IR Illumination	Illumination distance: 40m
Storage	Support for microSD/ microSDHC/ microSDXC card Support for recording to NAS
Operating Conditions	-30°C~55°C without heater -55°C~55°C with heater 10%~90%, No Condensation
Storage Conditions	-20°C~70°C
Approvals	EMC CE / FCC Environment IP66, IK10
Dimensions	Ø105x234 mm
Weight	1280 g

\*optional



**DYNACOLOR, INC. (HEADQUARTERS)**

No. 116, Jou Tz Street, Neihu, Taipei 114, Taiwan  
 Tel: +886-2-2659-8898 / Fax: +886-2-2659-8868  
 E-mail: info@dynacolor.com.tw  
 URL: http://www.dynacolor.com.tw