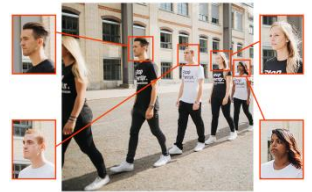


- ▶ AI Engine Gen 2
- ▶ Edge Dewarping and Backend Dewarping
- ▶ HDR and High Sensitivity
- ▶ Dual SD Card Storage
- ▶ Weatherproof (IP66)
- ▶ Vandal Proof IK10



## 6x AI Power Advancement

With an astounding 6x increase in AI power over its predecessor (AI Engine Gen1), D series with AI Engine Gen 2 stands ready to revolutionize the world with high accuracy object detection and recognition, even at long distances, all while delivering superior image quality.



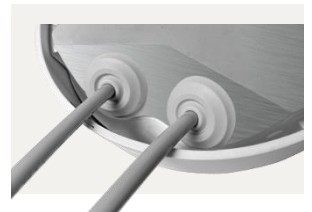
## Edge Dewarping

Edge dewarping engine enables the fisheye camera to dewarp fisheye images by camera rather than backend system. This reduces the integration effort for backend system and also enhances the flexibility of usage.



## Grommet Installation

Grommet design offers a secure cabling solution while safeguarding against the intrusion of water, dust, or other external elements. Grommet is typically compact in size. This compactness not only saves space but also eases the installation process as they can be easily inserted into the openings



## Features

- ▶ Multiple Sony Progressive Scan CMOS Sensor support up to 12M Resolution
- ▶ Edge Dewarping/Backend Dewarping
- ▶ Multi Codec support (H.265/H.264/MJPEG)
- ▶ Multiple Dewarp Display Mode Digital PTZ/ Panorama View/Quad View
- ▶ True Day/Night function (ICR)
- ▶ IR LED
- ▶ 3D Motion Compensated Noise Reduction (MCTF)
- ▶ ONVIF Profile S/G/T/M support
- ▶ Deep Neural Network Accelerated Engine
  - ▶ Detection and Recognition – Human / Vehicle
  - ▶ Behavior Analytics – Human / Vehicle / Object
- ▶ Smart Event function
  - ▶ External Input/ Motion Detection
  - ▶ Network Failure Detection/ Tampering Alarm
  - ▶ Periodical Event/ Manual Trigger/ Audio Detection
- ▶ Micro SD/SDHC/SDXC Card support
- ▶ Weatherproof (IP66)
- ▶ Vandal Proof (IK10 Rating)

## Custom Specification ( Default )

**Preliminary**

Sony 12M		
Image Sensor	Sony 12M 1/1.7" Sony Progressive CMOS	
Effective Pixels	HxV = 4072 x 3046	
Video Resolution	4000 x 3000	
Pixel Size	1.85 μm	
Frame Rate (Maximum)	H.265	12M @30fps
	H.264	12M @30fps
	MJPEG	2M @30fps
Lens		
Minimum Illumination	Color	0.1 lux
	B/W	0.01 lux
Lens	Type	1/1.7" Fisheye Lens, F2.8
	Focal Length	1.65 mm
	Horizontal FOV	190°
	Vertical FOV	190°

## Common Specification

Camera	
Day and Night	Removable IR-cut filter
Shutter Time	1~1/10K sec.
HDR	Yes <sup>1</sup>
Image Settings	Exposure, White Balance, Brightness, Sharpness, Contrast, Saturation, Hue, IR Threshold, Noise Reduction, Backlight Compensation, Text Overlay, Privacy Mask
Rotation	90°, 180°, 270° rotation
Video Codec	
Compression	H.265/H.264/MJPEG
Streaming	Up to 4 individually configurable streams in H.265/H.264/MJPEG Configurable resolution/frame rate/bandwidth LBR/VBR/CBR in H.265/H.264
Audio Codec	
Compression	G.711/G.726/AAC/LPCM
Streaming	2 way
Audio Input	Microphone built in and Line in
Audio Output	Speaker Line out
Network	
Interface	10/100/1000Mbps Ethernet
Security	User Authentication/HTTPS/IP Filter/IEEE 802.1x
Supported Protocols	ARP, PPPoE, IPv4/v6, ICMP, IGMP, QoS, TCP, UDP, DHCP, UPnP, SNMP, SMTP, RTP, RTSP, HTTP, HTTPS, FTP, NTP, DDNS
ONVIF	Profile S/G/T/M conformant
System Integration	
Events Triggers	External Input, Analytics, Network Failure Detection, Periodical Event, Manual Trigger
Event Actions	External output Activation Video and audio recording to edge storage File Upload : FTP, network share and email Notification : HTTP, FTP, email

<sup>1</sup> Depends on sensor

Intelligent Video Analytics	
General Analytics	Motion Detection/Tampering/Audio detection
DNN Analytics	People Counting Human/Vehicle Classification Object Classification

General		
Casing	Metal and Plastic	
Power	PoE IEEE802.3at, max TBD watt DC12V, max TBD , max TBD watt	
Connectors	RJ45	
	DC12V, Terminal Block	
	Alarm in x1, Alarm out x1, Terminal Block	
	Audio in, Terminal Block	
	Audio out, Terminal Block	
IR Illumination Distance	TBD	
Storage	Support for microSD/microSDHC/microSDXC card Support for recording to NAS	
Operating Conditions	-10°C~55°C, without heater -30°C~55°C, with heater 10%~90%, No Condensation	
Storage Conditions	-20°C~70°C	
Approvals	EMC	CE/FCC
	Safety	RoHS
	Environment	IP66, IK10
Dimensions	Ø147 x 62.8 mm	
Weight	TBD	

## Custom Specification

Default

Preliminary

Sony 12M		
Image Sensor	Sony 12M 1/1.7" Sony Progressive CMOS	
Effective Pixels	HxV = 4072 x 3046	
Video Resolution	4000 x 3000	
Pixel Size	1.85 $\mu$ m	
Frame Rate (Maximum)	H.265	12M @30fps
	H.264	12M @30fps
	MJPEG	2M @30fps
Lens		
Minimum Illumination	Color	0.1 lux
	B/W	0.01 lux
Lens	Type	1/1.7" Fisheye Lens, F2.8
	Focal Length	1.65 mm
	Horizontal FOV	190°
	Vertical FOV	190°

Sony 12.5M		
Image Sensor	Sony 12.5M 1/1.6" Sony Progressive CMOS	
Effective Pixels	HxV = 3552 x 3556	
Video Resolution	TBD	
Pixel Size	2.00 $\mu$ m	
Frame Rate (Maximum)	H.265	HDR 12M @30fps
	H.264	HDR 12M @30fps
	MJPEG	HDR 2M @30fps
Lens		
Minimum Illumination	Color	TBD lux
	B/W	TBD lux
Lens	Type	1/1.6" Fisheye Lens, F2.0
	Focal Length	1.7 mm
	Horizontal FOV	TBD
	Vertical FOV	TBD